



SMART, SECURE REMOTE ACCESS AND CONTROL OF CENTRALIZED AND DISTRIBUTED IT ASSETS

Gain consolidated access to physical and virtualized servers, serial devices and Raritan's Dominion KX, KSX and SX appliances from a single, secure appliance.

Raritan's CommandCenter Secure Gateway (CC-SG) provides IT and lab organizations with secure and consolidated access and control of all technology platforms at the application, operating system and BIOS level. CC-SG's single pane of glass helps simplify remote management and expedite troubleshooting of your physical and virtual servers, intelligent PDUs, and serial devices. Plus, it helps you maximize uptime and productivity.

From small and medium server rooms to large enterprises with multiple data centers, CC-SG is relied upon worldwide for secure and consolidated remote access and control. Its key features meet the needs of today's IT and lab administrators:

- Secure, single sign-on to a single IP address for managing Raritan's Dominion[®] KX series KVM, serial and intelligent PDU solutions
- Single point of access to physical servers (including blade systems), virtual machines and VMware[®] infrastructure
- Centralized, role-based, user access policy management
- Flexible user access, including the HTML Access Client interface, Administration Client, KX III and IV User Station integration, and Java-free KVM access with the HTML and Active KVM Clients
- New Desktop Administration Client that doesn't require Java
- Supports remote access and power control through service processors and IP tools — including HP[®] iLO, Dell[®] DRAC, IBM[®] RSA II and IMM, IPMI, RDP, VNC, SSH and Telnet, as well as Web browser applications
- Virtual media support to load software and remote booting
- Consolidated logging and audit trail, including detailed activity reports

CC-SG directly provides remote power control for Raritan PX and Servertech CDU1 and PRO2 PDUs and also integrates with Power IQ[®] for remote power control of Raritan and third-party devices.

COMMANDCENTER SECURE GATEWAY

Centralized access and control of your entire IT or lab infrastructure. CC-SG is available as a hardware or virtual appliance, with the following versions:

CC-E1 Hardware Appliance

- 1U form factor
- Dual power supplies

VMware Virtual Appliance

- Runs on ESX and ESXi

Hyper-V Virtual Appliance

- Windows Server 2008 & 2012

XEN Virtual Appliance

- XenServer 6.x

INTUITIVE MENUS AND EASY REPORTING

- The simple and intuitive "node view" allows users to easily access any target system or device through a variety of interfaces, including in-band tools and out-of-band KVM switches and serial console servers
- Comprehensive reporting capabilities—everything from usage and auditing to assets and nodes

CORE FEATURES TO HELP YOU MANAGE BETTER

ROBUST SECURITY

- Low security profile, Linux®-based appliance architecture
- Powerful policy management allows access and control based on a broad range of user-customizable criteria
- Secure 256-bit AES encryption with selectable TLS versions for end-to-end node access
- Support for a broad range of authentication protocols, including LDAP, Active Directory®, RADIUS and TACACS+
- Security updates and hardening; immune to the Heart-bleed, Poodle, Freak and Shellshock vulnerabilities
- Ability to import user groups from Active Directory servers for user authentication
- Support for two factor authentication with SecurID® on RADIUS servers
- IP-based access control lists (ACL), which grant or restrict user access by IP address
- Proxy mode for secure access to devices through firewalls/VPNs
- Strong user password authentication, SAS 70 compliance for configurable failed login attempts and user lockout

COMMANDCENTER SECURE GATEWAY

Secure, Centralized Remote Access and Control of your IT or Lab Infrastructure

Out-of-Band KVM and Serial Access



Raritan Dominion Solutions

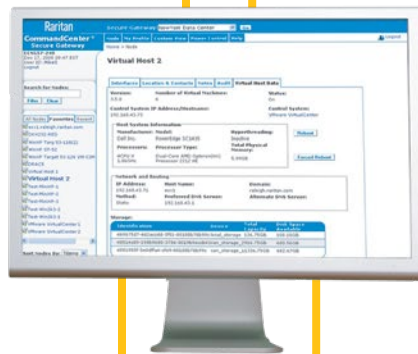
- KX III, SX II, KSX II, KX IV-101 Rackmount and blade servers, Network and serial devices
- Raritan and Servertech Intelligent PDUs

Remote Power Control

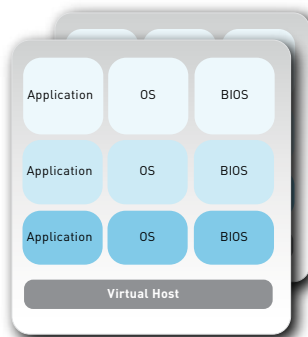


Sunbird Power IQ Integration

- Power Control of Raritan PX, PX2 & PX3 and Servertech CDU1 and PRO2 PDUs
- PIQ Monitoring Software Integration



Virtual Machines



VMware



CommandCenter is available as a hardware or virtual appliance

In-Band Data Center Access Solutions



IP Tools

- RDP
- VNC
- SSH
- Telnet
- Web Browser

Service Processors

- iLO
- DRAC
- RSA
- IPMI
- IMM

SECURE, CENTRALIZED ACCESS AND CONTROL

INTEGRATED VMWARE VIRTUALIZATION SUPPORT

- Consolidated access to physical and virtual servers, including centralized audit and reporting
- Intuitive virtualization discovery function allowing import and configuration of a virtual environment
- Configurable RDP, VNC or SSH application selection with single sign-on capabilities
- Simple virtual machine, virtual host server and vCenter information layout with relevant data

HIGH AVAILABILITY AND REDUNDANCY

- Clustered hardware appliances delivers simple redundancy through primary and secondary CommandCenter Secure Gateway appliances
- Hot-swappable RAID memory setup, dual hard drives and dual power supplies
- "Neighborhood" configuration allows for a collection of up to 10 CC-SG units
- Leverage VMware's Fault Tolerance feature for easy-to-use, cost effective high availability

SCALABLE AND FLEXIBLE REMOTE ACCESS

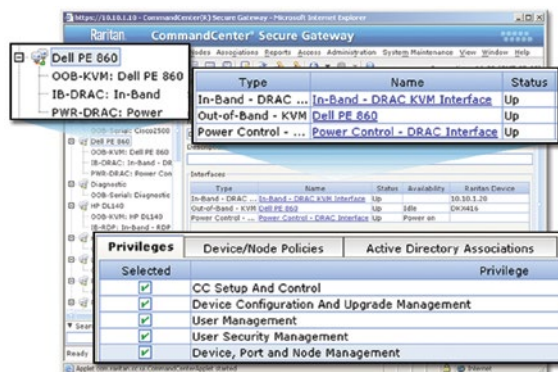
- In-band access methods like RDP, VNC, Telnet and SSH
- SSH support for CLI access to serial targets connected to Dominion SX II, KX III/DSAM and KSX II

EASE OF MANAGEMENT FOR ADMINISTRATORS

- Easy CSV import/export feature enables convenient entry of CC-SG data
- Guided setup of user group and security policies
- Back up and restore Raritan device configurations
- Syslog and SNMP support
- Raritan KVM, serial and power device discovery with device availability status, health updates and alarms for Dominion series
- Easily configure individual user access policies to Universal Virtual Media™ on supported devices
- Central storage of firmware for Raritan KVM and serial switches for convenient bulk editing updates
- Task and notification managers to schedule tasks and review status
- CC-SG Desktop Admin Client for Windows
- Comprehensive Web Services API to integrate with customer systems

JAVA-FREE ACCESS FOR USERS

- Intuitive and simplified view for remote access and power control from one screen
- Secure chat feature allows users to troubleshoot problems collaboratively
- Easy-to-use, feature-rich HTML client
- Java-free KVM access for Windows, Linux and Mac
- Dominion KX III and IV User Station integration



ONE VIEW OF THE ENTIRE ENTERPRISE

- Simplified, one-click access
- Consolidated access and power control on a single screen
- Sophisticated policy management with granular privileges

HARDWARE APPLIANCE SPECIFICATIONS

Features	E1
Form Factor	1U
Dimensions (DxWxH)	7.3" x 24.2" x 1.75"; 615 x 400 x 44 mm
Weight	23.8 lbs; 10.8 kg
Power	Dual Supply (2 x 400 watt)
Operating Temperature	10°-35° C; 50°-95° F
Mean Time Between Failure (MTBF)	36,384 hours
KVM Admin Port	USB Keyboard/Mouse
Serial Admin Port	N/A
Console Port	2 x USB 3.0 + 2 x USB 2.0 Ports (Rear) VGA
Hardware	
Processor	Intel® Core™ i7-7700
Memory	8 GB
Network Interfaces	(2) 10/100/1000 Ethernet (RJ45)
Hard Disk & Controller	2 x 128 GB SSD SATA 6Gb/s
CD-ROM Drive	N/A
Remote Connection	
Protocols	TCP/IP, UDP, IPv4/IPv6, RADIUS, LDAP, TACACS+, SNMPv3, SMTP, HTTP, HTTPS
Warranty	Two years with advanced replacement*, Guardian® extended warranty also available
Software Maintenance	One year maintenance free with purchase Additional years can be purchased Software updates available with maintenance

VIRTUAL APPLIANCE SPECIFICATIONS

Vmware Virtual Appliance

- ESX/ESXi 6.0, 6.5, 6.7
- 4 GB Memory, 40 GB Disk

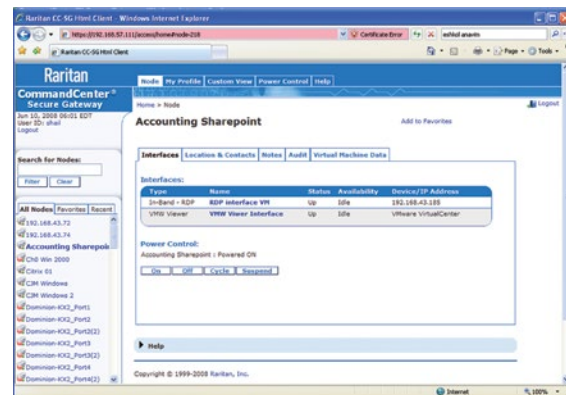
Hyper-V Virtual Appliance

- Microsoft Windows 8.1, 10, 12
- 4 GB Memory, 40 GB Disk

XEN Virtual Appliance

- XenServer 7.0, 7.2
- 4 GB Memory, 40 GB Disk

VIRTUAL MACHINE ACCESS



Stay connected to virtual servers even when they are moved from one virtual host to another. Issue on, off, cycle or suspend virtual power commands using the control buttons.

Visit www.raritan.com/ccsg
or Call 1.800.724.8090 for more information.

©2022 Raritan Inc. All rights reserved. Raritan® is a registered trademarks of Raritan Inc. or its wholly-owned subsidiaries. All others are registered trademarks or trademarks of their respective owners. Raritan began developing KVM switches for IT professionals to manage servers remotely in 1985. Today, as a brand of Legrand, we are a leading provider of intelligent rack PDUs. Our solutions increase the reliability and intelligence of data centers in 9 of the top 10 Fortune 500 technology companies. Learn more at Raritan.com V1084R15

Raritan®
A brand of **Legrand**